

Collective Impact Collaborative

Heroin/Opioid Epidemic
Montgomery County, Ohio

September 28, 2016

Montgomery County Community Health Improvement Plan

Montgomery County: A healthy, safe, and thriving community!

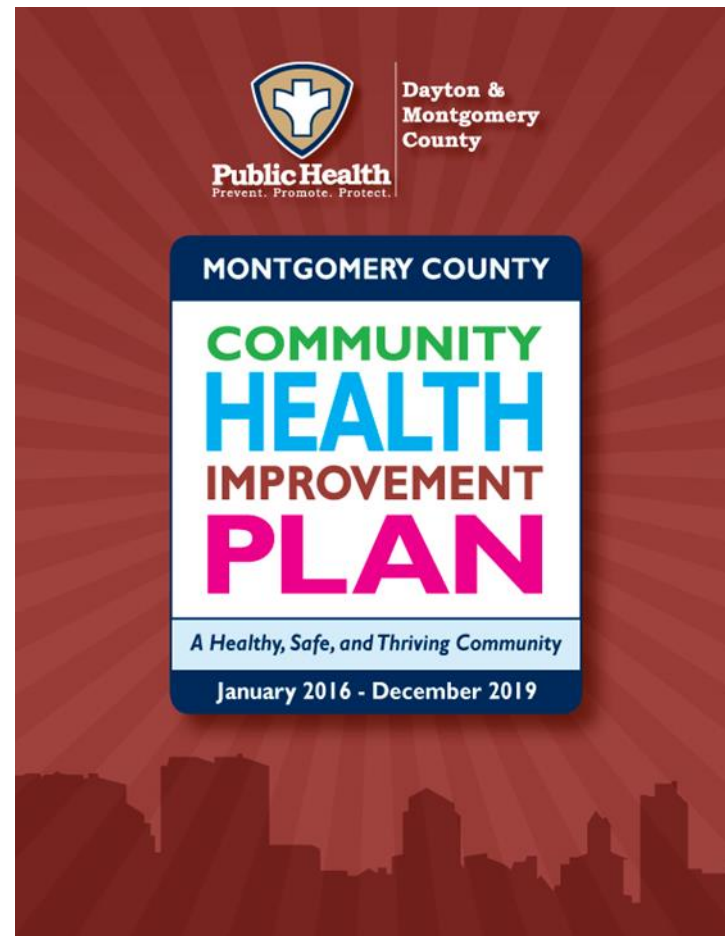
We believe that all residents of Montgomery County should have:

- equal access to resources that promote a healthy lifestyle
- an environment that promotes health and wellness
- social support and community connections
- knowledge about healthy choices and behaviors



Health Priorities

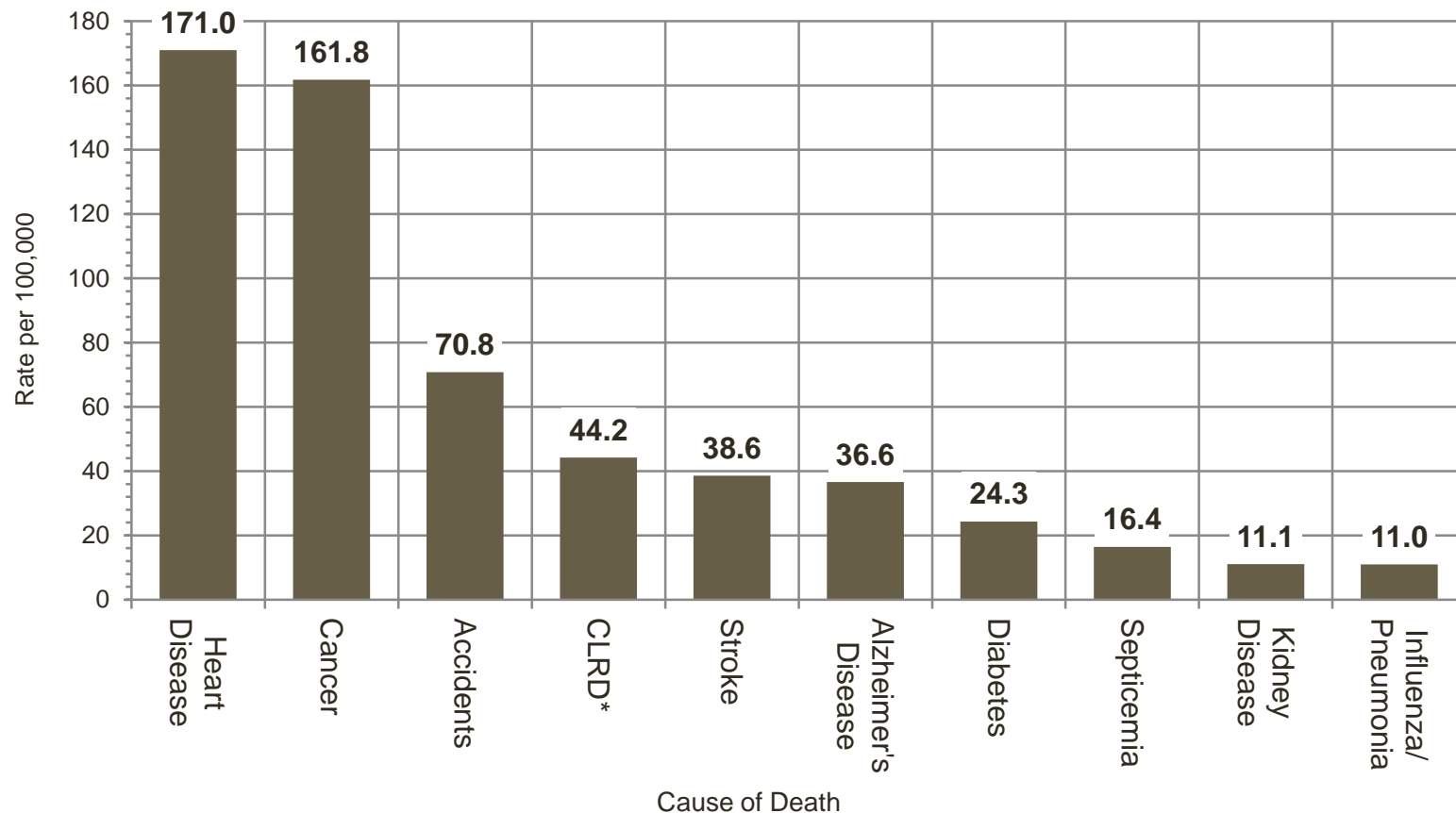
- Birth Outcomes
- Chronic Disease Prevention
- Behavioral Health



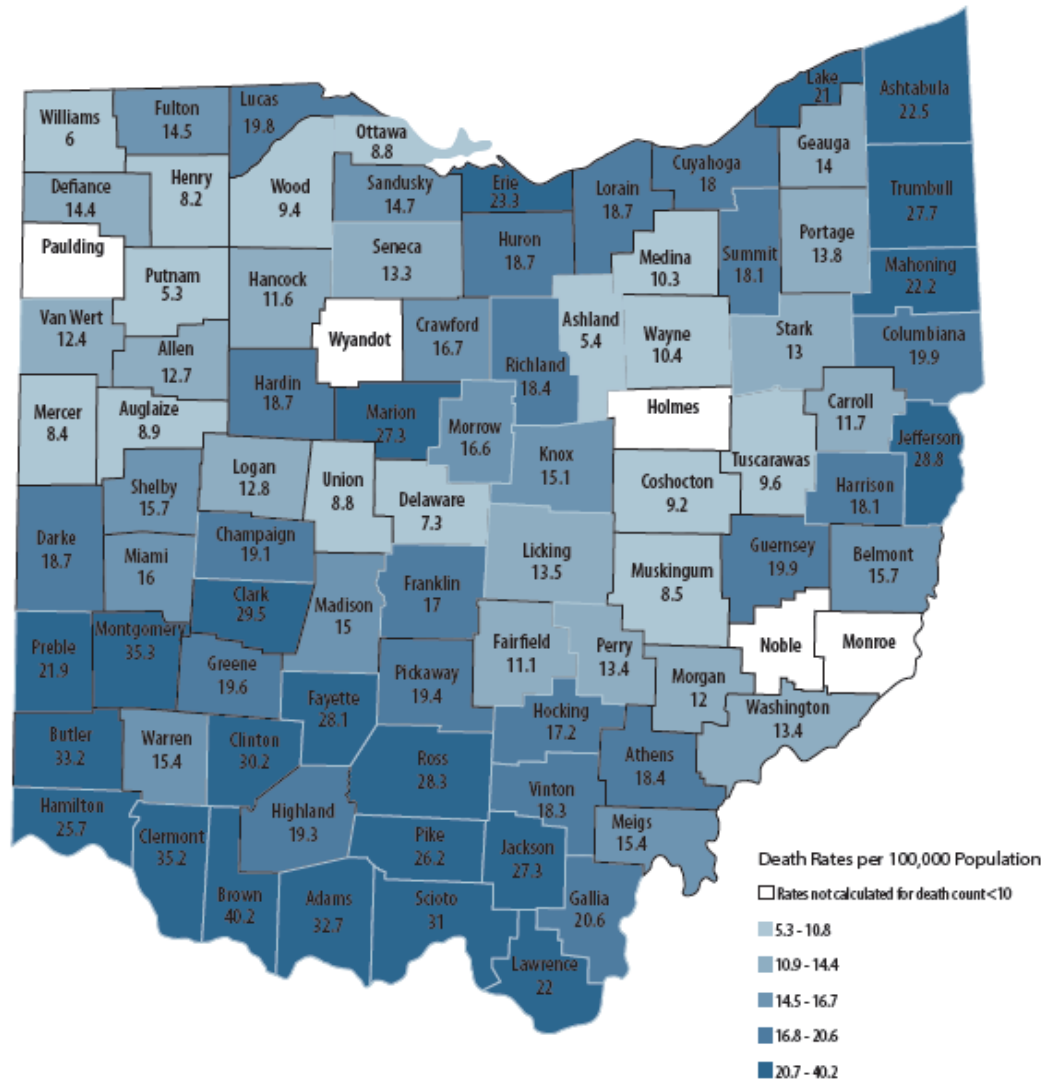
Montgomery County

Leading Causes of Death

Age-adjusted death rate for the top 10 causes of death
Montgomery County, 2014-2015



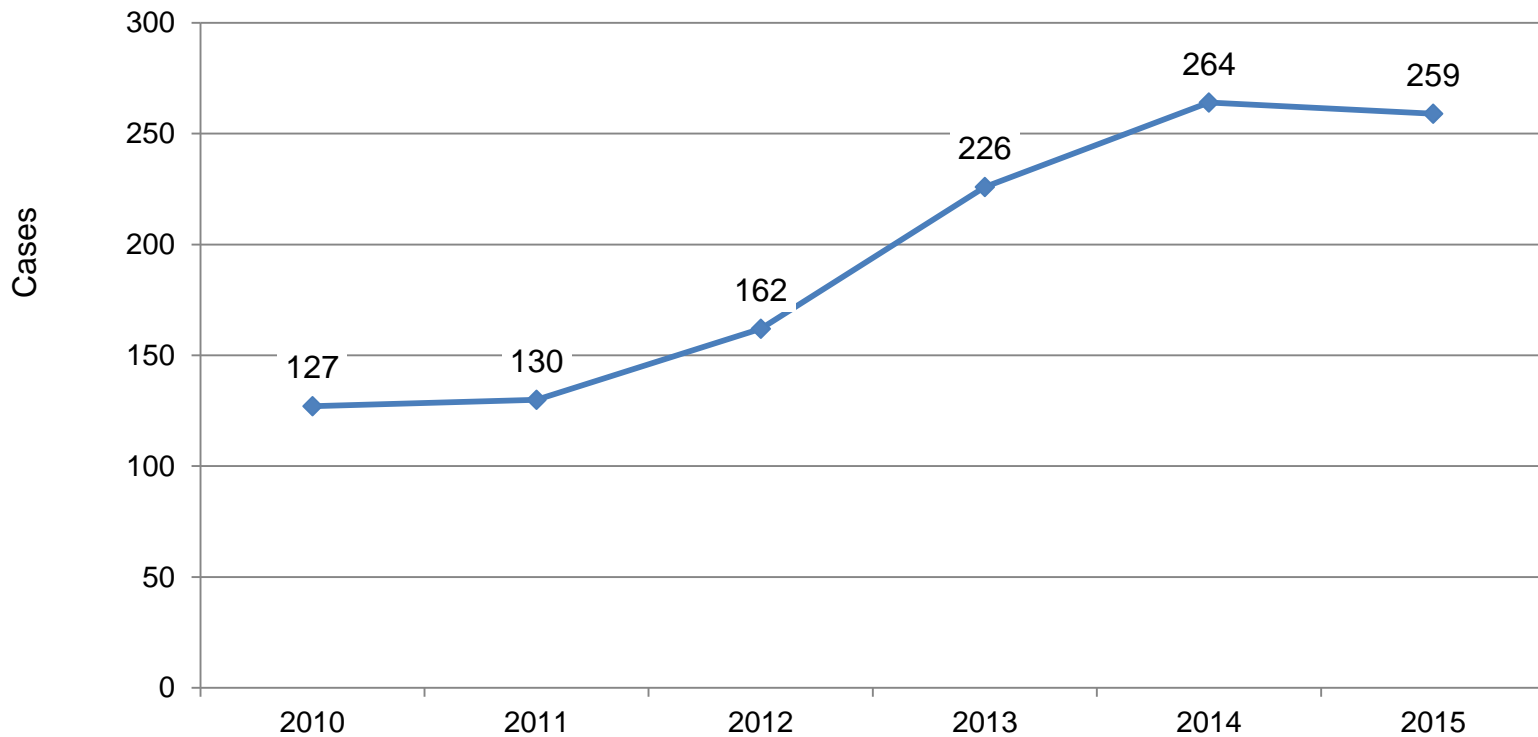
Ohio Drug Overdose Data 2010-2015



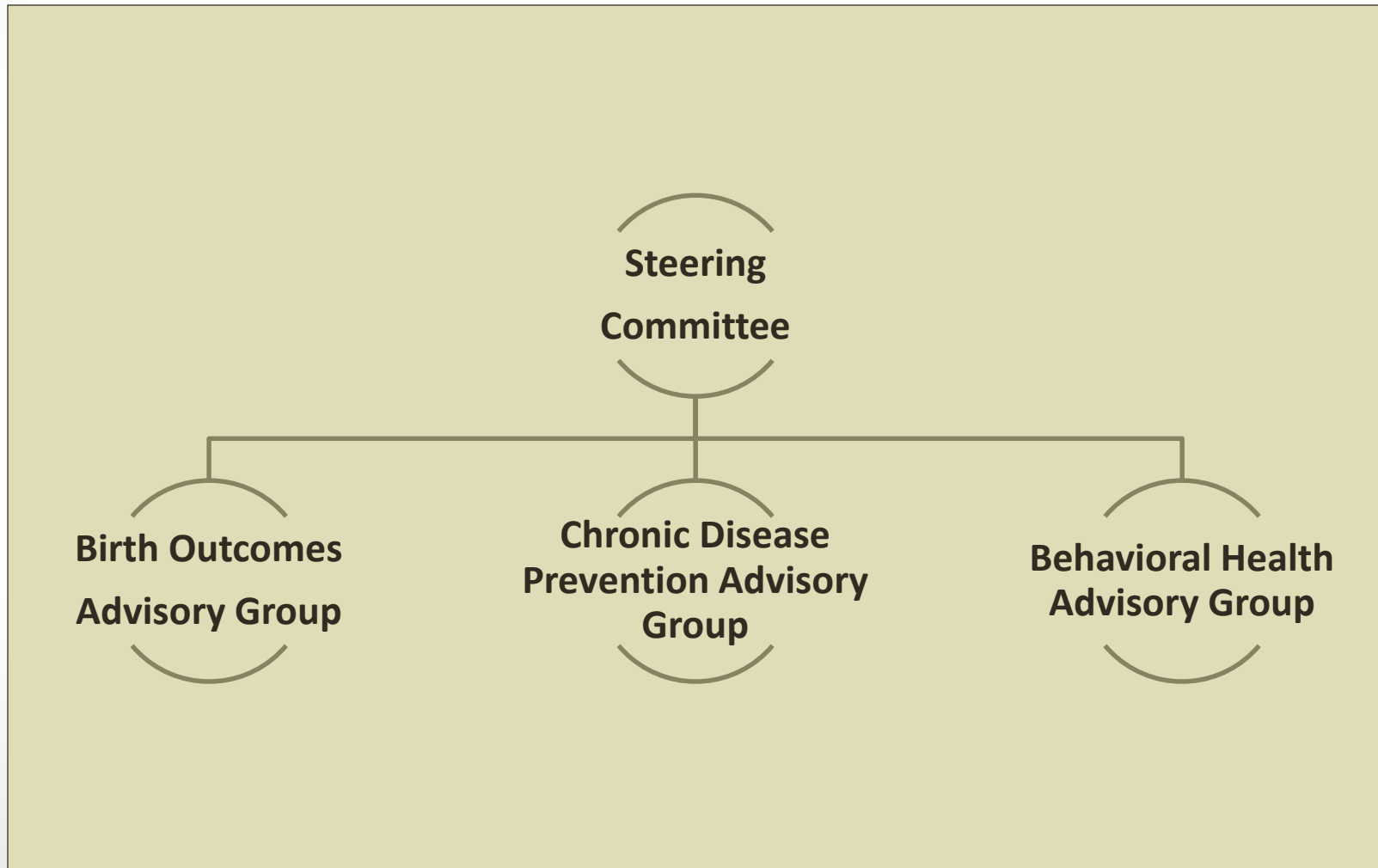
Montgomery County

Unintentional Drug Overdose Deaths

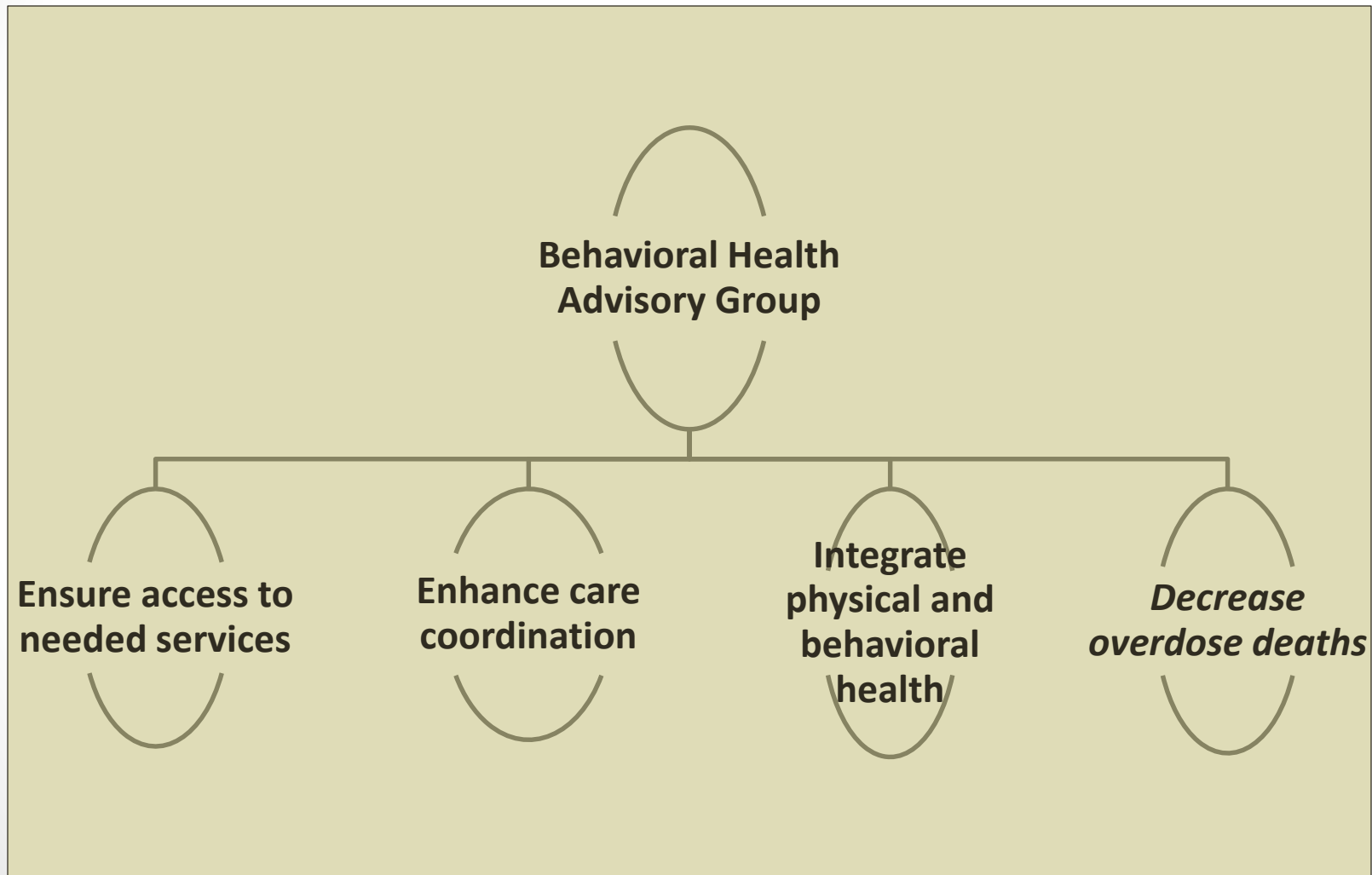
Accidental Drug Overdose Deaths in
Montgomery County 2010-2015



CHIP Organization Chart



CHIP Organization Chart



Opioid Epidemic

Decrease Overdose Deaths

- Conditions for Collective Impact

1

- Common Agenda

2

- Shared Data

3

- Reinforcing Actions

4

- Communication

5

- Backbone Support



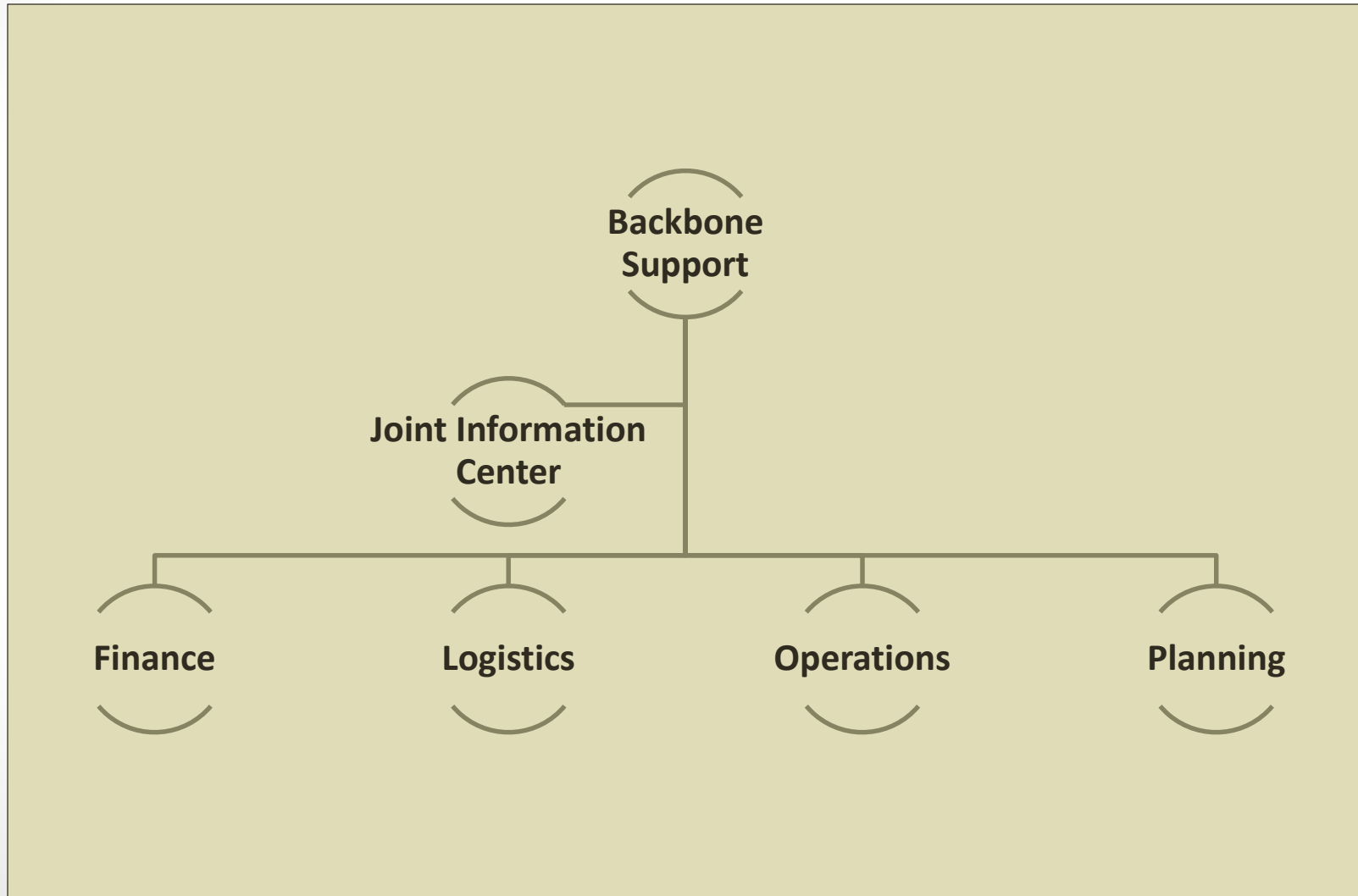
Incident Management System

Overview

- Used to manage local, state and federal responses to complex multi-agency, multi-jurisdictional incidents / issues
 - uses a common language and response culture
 - optimizes combined efforts
 - eliminates duplicative efforts
 - allows for collective approval of operations, logistics, planning, and finance activities
 - encourages a cooperative response environment
 - requires constant communication
 - uses a consolidated Action Plan
 - is scalable to meet the needs of the incident / issue



Incident Management System Framework



Montgomery County IMS

Decrease Overdose Deaths

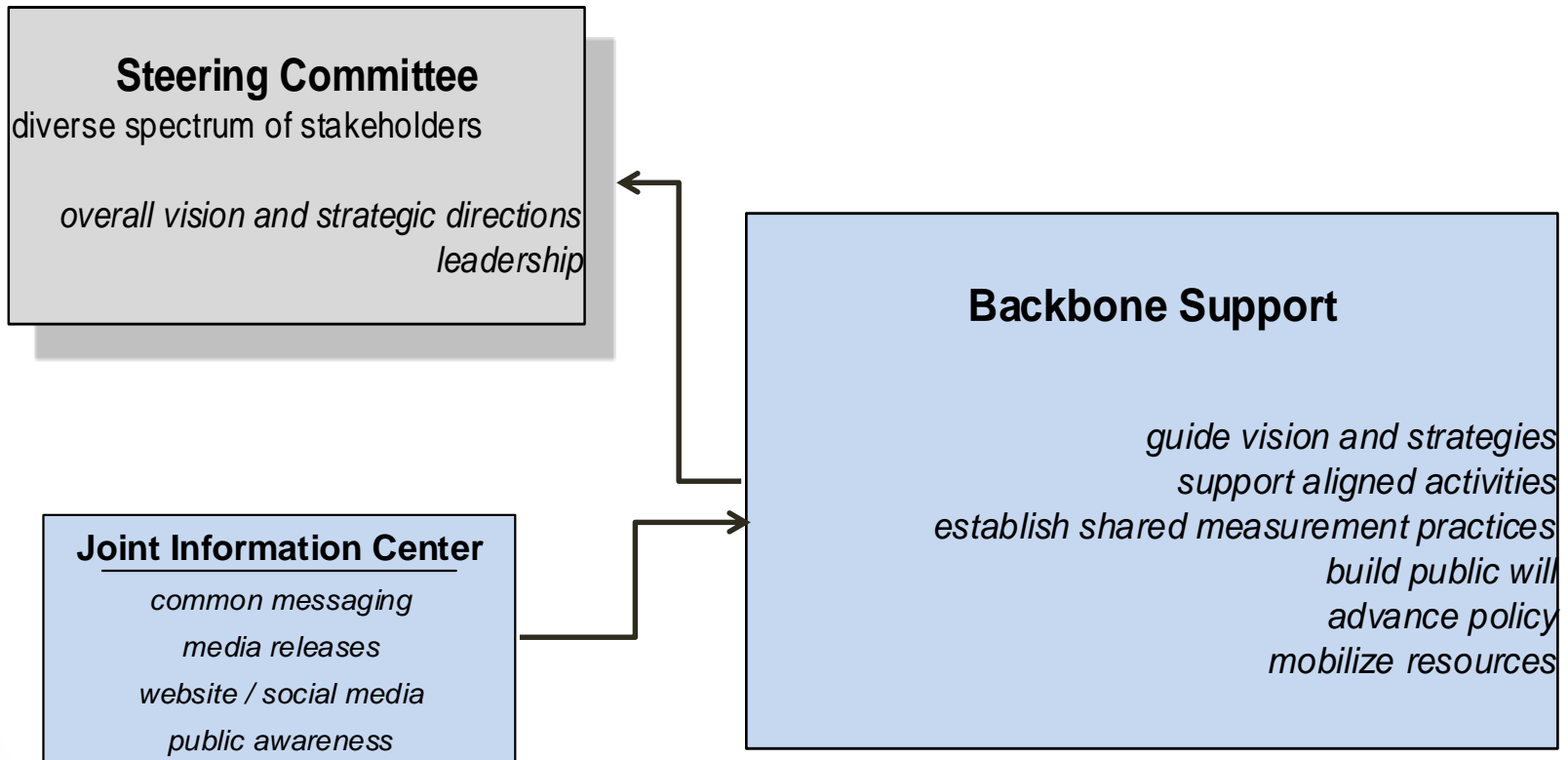
Guiding Principles

- *Establish a common agenda*
- *Share measurement data*
- *Adopt mutually reinforcing activities*
- *Assure continuous communication*
- *Serve the whole community through a systems-based approach*
- *Promote shared values*
- *Trust each other*
- *Use results-based planning*
- *Share responsibility*
- *Value diverse perspectives*
- *Promote inclusion*
- *Assure respectful communication*
- *Be transparent*
- *Commit to excellence*
- *Commit to empowering our community*



Montgomery County IMS

Decrease Overdose Deaths



Montgomery County IMS

Decrease Overdose Deaths

Operations Section

Action Plan implementation

Planning Section

Action Plan development
situation status / data reports
Poisoning Death Review
Sequential Intercept Mapping
evaluation

**Reduce supply of
illegal opioids**

Educate and inform

**Expand Naloxone and
syringe exchange**

**Prevent drug use
before it starts**

**Promote best practice
prescribing
guidelines for pain**

**Expand pathways to
treatment and
recovery**



Montgomery County IMS

Next Steps and Timeline

- IMS framework to be operational by January 2017
- Identify personnel for:
 - Steering Committee
 - Joint Information Center
 - Planning Section
 - Operations Section
- Develop written Action Plan
- Communicate progress to all participants



Collective Impact Information

Video – Paul Schmitz

www.youtube.com/MontgomeryCountyOH

Presentation – Paul Schmitz

www.mcoho.org

Click on: Departments

Click on: Human Services Planning & Development

Click on: FCFC Strategic Planning

Questions

Email:

info@phdmc.org

Adjourn



Public Health
Prevent. Promote. Protect.
Dayton & Montgomery County