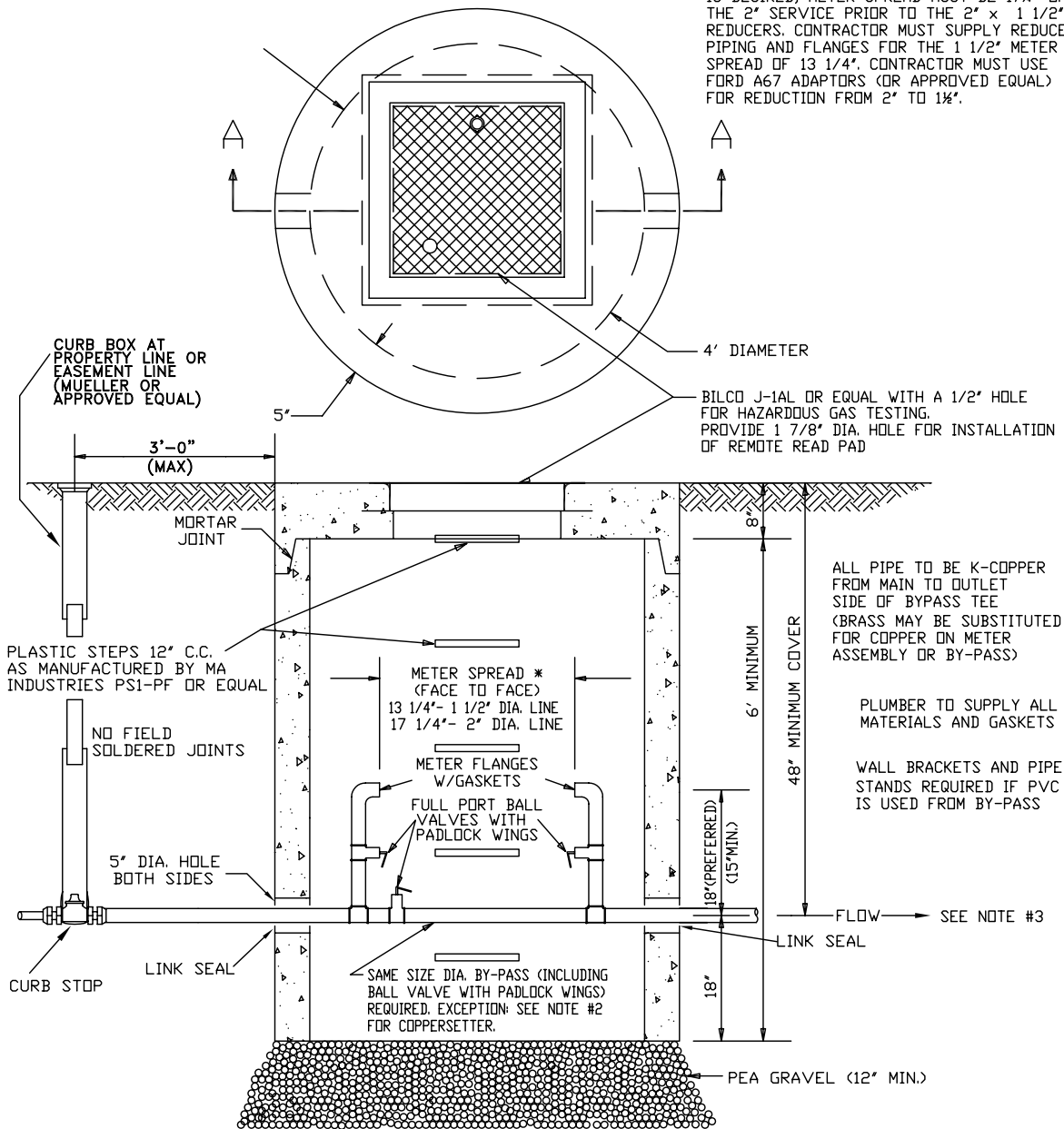


*IF A 2" LINE IS INTO PIT & A 1 1/2" METER IS DESIRED, METER SPREAD MUST BE 17 1/4" ON THE 2" SERVICE PRIOR TO THE 2" x 1 1/2" REDUCERS. CONTRACTOR MUST SUPPLY REDUCERS, PIPING AND FLANGES FOR THE 1 1/2" METER SPREAD OF 13 1/4". CONTRACTOR MUST USE FORD A67 ADAPTORS (OR APPROVED EQUAL) FOR REDUCTION FROM 2" TO 1 1/2".



ALL PIPE TO BE K-COPPER FROM MAIN TO OUTLET SIDE OF BYPASS TEE (BRASS MAY BE SUBSTITUTED FOR COPPER ON METER ASSEMBLY OR BY-PASS)

PLUMBER TO SUPPLY ALL MATERIALS AND GASKETS

WALL BRACKETS AND PIPE STANDS REQUIRED IF PVC IS USED FROM BY-PASS

SECTION "A" - "A"

NOTES:

1. ALTERNATE PIT DESIGN MAY BE SUBMITTED FOR REVIEW.
2. FORD VBB76-18B (OR 15B) x 13 1/4" (1 1/2") OR VBB77-18B (OR 15B) x 17 1/4" (2") COPPERSETTERS OR EQUAL MAY BE SUBSTITUTED. COPPERSETTER MUST HAVE 1" MIN. DIAMETER BYPASS.
3. BACKFLOW PREVENTION DEVICE SPECIFIED BY MONTGOMERY COUNTY WATER SERVICES WILL BE REQUIRED AT SERVICE ENTRANCE.

MONTGOMERY COUNTY
WATER SERVICES



PRECAST 1 1/2" & 2"
WATER METER PIT
(1 1/2" & 2" SERVICE LINE)
(FOR OFF ROAD USE ONLY)

Revised ~ 11/26/08

SCALE : NONE

DATE : 11/01/06

FILE NAME: 2MTRPIT